

| | | |
|------------------|--|--|
| 1) CONSTRUCTION: | CONDUCTOR: 28 AWG 7/36 STRANDED TINNED COPPER INSULATION: HIGH DENSITY POLYETHYLENE, .008" NOM. WALL THICKNESS PAIRS: COLOR CODED SINGLES TWISTED INTO PAIRS CABLE: (4) TWISTED PAIRS TWISTED TOGETHER TO FORM A CABLE CORE SHIELD: AN ALUMINUM POLYESTER ALUMINUM FOIL SHIELD (100% COVERAGE) SHALL BE APPLIED OVER THE CABLE CORE AND SHALL INCLUDE A 28 AWG STRANDED TINNED COPPER DRAIN WIRE IN CONTACT WITH THE OUTER SURFACE. JACKET: LOW SMOKE ZERO HALOGEN, (COLOR, PER CHART 1) , .023" NOM. WALL THICKNESS | NOM. DIA. .015" .0325" MIN. .0331" MAX. .064" .146" .190" NOM .195" MAX (BY CALIPER) |
|------------------|--|--|

2) PHYSICAL PROPERTIES:

| | |
|--------------------------|-----------|
| TEMPERATURE RATING, MAX. | 75°C |
| TEMPERATURE RATING, MIN. | -20°C |
| WT./M', NOM., NET. | 16.6 LBS. |

CHART 1:

| QUABBIN P/N | JACKET COLOR |
|-------------|--------------|
| 2270 | BLACK |
| 2271 | RED |
| 2272 | ORANGE |
| 2273 | YELLOW |
| 2274 | GREEN |
| 2275 | BLUE |
| 2276 | VIOLET |
| 2277 | GRAY |
| 2278 | WHITE |

3) ELECTRICAL CHARACTERISTICS:
SEE PAGE 2

4) AGENCY APPROVALS:
NEC (UL) TYPE CM-ST1
CEC C(UL) TYPE CM

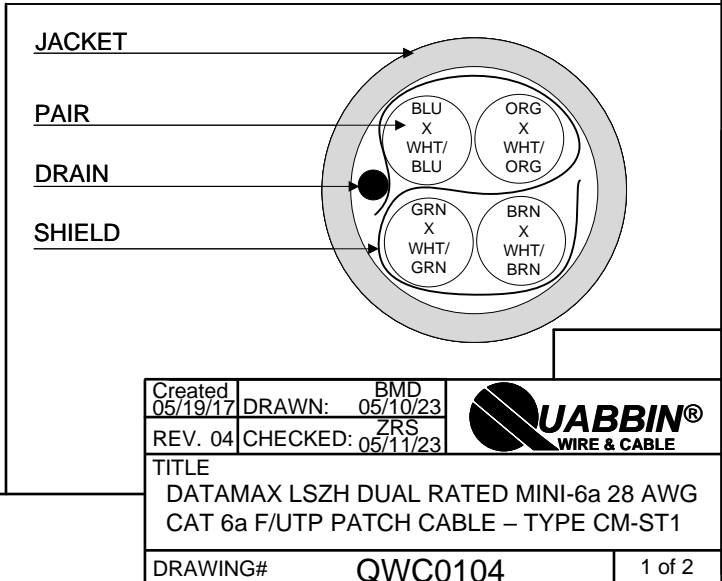
5) APPLICATION:
RoHS COMPLIANT MATERIALS. MEETS TIA 568.2-D CHANNEL REQUIREMENTS AT 56 METERS. 7.8 METERS OF PATCH CABLE WITH A 90 METERS PERMANENT LINK (97.8 METER CHANNEL) OR 10 METERS OF PATCH CABLE WITH AN 86 METER PERMANENT LINK (96 METER CHANNEL). SUPPORTS CAT 6A APPLICATIONS INCLUDING 10GBASE-T AT THESE LENGTHS. PATENT NO. US 9,355,759 B2.

6) PRINT: (WHITE INK ON BLACK JACKET, ALL OTHERS BLACK INK)
QUABBIN DATAMAX LSZH MINI-6a F/UTP PATCH CORD P/N **(QWC P/N PER CHART 1)** -- PATENT NO. US 9,355,759 B2--
CM C(UL)US CM-ST1 28 AWG 75C -- RoHS -- **(LOT DESIGNATOR) (SEQUENTIAL FOOTAGE)**

7) COLOR CODE:

1. WHITE/ORANGE X ORANGE
2. WHITE/BROWN X BROWN
3. WHITE/GREEN X GREEN
4. WHITE/BLUE X BLUE

8) PUT UPS
TO BE PACKAGED AS PER QWC'S STANDARD PACKAGING



CUSTOMER APPROVAL: _____ DATE: _____


| | | |
|---|--------------------------|--------|
| Created 05/19/17 | DRAWN: BMD 05/10/23 | |
| REV. 04 | CHECKED: ZRS 05/11/23 | |
| TITLE DATAMAX LSZH DUAL RATED MINI-6a 28 AWG CAT 6a F/UTP PATCH CABLE – TYPE CM-ST1 | | |
| DRAWING# | | 1 of 2 |

3) ELECTRICAL CHARACTERISTICS:

| | |
|-------------------------------|----------------------------|
| CAPACITANCE, MUTUAL, NOM. | 13.5 PF/FT. AT 1 MHz |
| DIELECTRIC WITHSTANDING, MIN. | 1500V RMS |
| VOLTAGE RATING, MAX. | 300V |
| D.C. RESISTANCE, NOM. | 22.4 Ω/100m (68.2 Ω/1000') |

NOTE: TESTING FOR THE FOLLOWING IS CONDUCTED OFF THE REEL, USING 50m LENGTHS. (FOR 100m OF CABLE)

| | | | |
|----------------------------|------------------------|--|----------------------------|
| IMPEDANCE | 100 ± 15 Ω 1 – 500 MHz | | |
| IMPEDANCE, SMOOTHED | 100 ± 10 Ω TYPICAL | 5 – 500 MHz | |
| RETURN LOSS | 1 ≤ f < 2 MHz | 17 + 9.5 LOG (f) dB MIN | |
| | 2 ≤ f < 10 MHz | 20 + 5 LOG (f) dB MIN | |
| | 10 ≤ f < 20 MHz | 25 dB MIN | |
| | 20 ≤ f ≤ 500 MHz | 25 – 8.6 LOG(f/20) dB MIN | |
| PS NEXT | 1 ≤ f ≤ 500 MHz | 42.3 – 15 LOG(f/100) dB MIN | |
| NEXT | 1 ≤ f ≤ 500 MHz | 44.3 – 15 LOG(f/100) dB MIN | |
| PSACRF | 1 ≤ f ≤ 500 MHz | 24.8 – 20 LOG(f/100) dB MIN | |
| ACRF | 1 ≤ f ≤ 500 MHz | 27.8 – 20 LOG(f/100) dB MIN | |
| INSERTION LOSS | 1 ≤ f ≤ 500 MHz | 1.95 [1.82 √f + 0.0091(f) + 0.25/√f] dB MAX | |
| DELAY | 1 ≤ f ≤ 500 MHz | 534 + 36/√f ns MAX | |
| DELAY SKEW | 1 ≤ f ≤ 500 MHz | <45 ns | |
| TCL | 1 ≤ f ≤ 500 MHz | 30 – 10 LOG(f/100) dB MIN | |
| ELTCTL | 1 ≤ f ≤ 30 MHz | 35 – 20 LOG(f) dB MIN | |
| PS ANEXT LOSS (6 AROUND 1) | 1 ≤ f ≤ 500 MHz | 62.5 – 15 LOG (f/100) dB MIN 67 dB MIN | 50 - 500 MHz 1 - 50 MHz |
| PSAACRF | 1 ≤ f ≤ 500 MHz | 38.2 – 20 LOG (f/100) dB MIN | |
| VELOCITY OF PROPAGATION | 68% | | |

| | | |
|---|--------------------------|---|
| Created 05/19/17 | DRAWN: BMD 05/10/23 |  |
| REV. 04 | CHECKED: ZRS 05/11/23 | |
| TITLE DATAMAX LSZH DUAL RATED MINI-6a 28 AWG CAT 6a F/UTP PATCH CABLE – TYPE CM-ST1 | | |
| DRAWING# | | QWC0104 |
| | | 2 of 2 |

CUSTOMER APPROVAL:

DATE: